

## PRESS RELEASE

For immediate release:

### Sarah Butterfield: Dusk and Dawn in The Solent

24 November 2023 – 24 February 2024



Sarah Butterfield  
Evening in the Solent VI, January 2010  
©The Artist



Sarah Butterfield  
Sunrise in the Solent 6, February 2016  
©The Artist

Petersfield Museum and Art Gallery is delighted to announce the opening of **Sarah Butterfield: Dusk and Dawn in The Solent** on 24 November 2023. Butterfield's expressive paintings explore the changing quality of light and colour at dusk and dawn over The Solent, Hampshire. The Solent is the body of water that separates the Isle of Wight from the mainland of England, along the Hampshire coast.

Butterfield takes the early ferry from Portsmouth to the Isle of Wight to capture the colours in the sky just before the sun rises; and at dusk, she looks across Langstone Harbour towards Portsmouth as the sun sets behind the gleaming lights of the city.

Sarah is an award-winning artist who, inspired by Impressionist painter, Claude Monet in his series of paintings of Rouen Cathedral or haystacks, loves to paint similar views as the weather and time of day change.

‘The sometimes fierce natural colours of the evening sky are brought into close opposition with the piercing necklace of artificial lights of the city strung out below.’ SARAH BUTTERFIELD

By returning to the same locations throughout the year, Butterfield becomes attuned to the gradually changing position of the sun on the horizon, the quality of light and the beauty of a specific place. Twilight, when the sun is just below the horizon, occurs both before sunrise and after sunset, and captures the full force of all the colours and the ‘fireworks of the sky’.

The exhibition contains 26 paintings displayed following the months of a year, to chart the rhythms, colours and poetry across the seasons.

Sarah Butterfield: Dusk and Dawn in The Solent

24 November 2023 – 24 February 2024

Petersfield Museum and Art Gallery

[www.petersfieldmuseum.co.uk](http://www.petersfieldmuseum.co.uk)

*Sarah Butterfield: Dusk and Dawn in The Solent* presents an exhibition of expressive paintings that explore the changing quality of light and colour in the sky across The Solent throughout the year. Butterfield refers to the ‘fireworks of the sky’ and how it is more luminous after the sun sets and before it rises.

[www.petersfieldmuseum.co.uk](http://www.petersfieldmuseum.co.uk) / [www.sarahbutterfield.co.uk](http://www.sarahbutterfield.co.uk)

-End-

For enquiries about marketing, press and communications, please contact:

- Molly Schmidt (Marketing and Communications Officer)  
communications@petersfieldmuseum.co.uk
- Press Images are available from Molly Schmidt

### Notes to Editors

#### About Petersfield Museum and Art Gallery

- The exhibition will be held in the Flora Twort Gallery.
- Petersfield Museum and Art Gallery is an accredited, independent museum and registered charity.
- Established in 1999, it recently underwent a £4 million redevelopment, supported by the National Lottery Heritage Fund.
- A rare example of a restored Victorian Justice Heritage site, its permanent collections include social history archives and artefacts relating to Petersfield and the surrounding area, the Flora Twort Art Collection, the Don Eades Photographic Collection and the Bedales Historic Costume Collection. It also hosts the Wilton-Steer Collection of works by and about the poet Edward Thomas, housed in The Edward Thomas Study Centre.
- Website: [www.petersfieldmuseum.co.uk](http://www.petersfieldmuseum.co.uk)
- Instagram: [www.instagram.com/petersfieldmuseum](https://www.instagram.com/petersfieldmuseum)
- Twitter: [www.twitter.com/PfieldMuseum](https://www.twitter.com/PfieldMuseum)
- Facebook: [www.facebook.com/petersfieldmuseum](https://www.facebook.com/petersfieldmuseum)

#### Visiting Petersfield Museum and Art Gallery

Opening hours: Tuesday to Saturday – 10:00am to 5:00pm (last entry at 4:00pm)

Admission prices: Adults: £8.00, Young People (5-17): £4.00, Children Under 5: Free

Discounts & Concessions available – please see website for more details.

To book or for information about events, visit [www.petersfieldmuseum.co.uk](http://www.petersfieldmuseum.co.uk)

Press Images



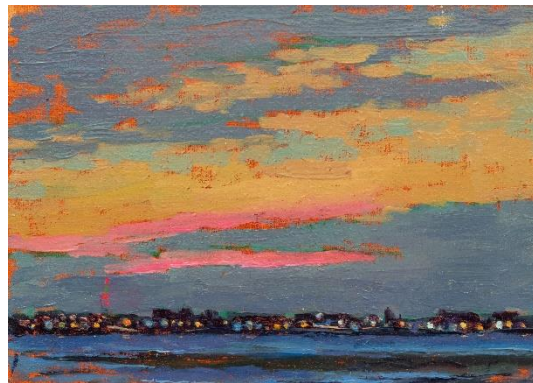
Sarah Butterfield  
January 2010  
Evening in The Solent VI  
oil on board, 13 x 18 cm  
©The Artist



Sarah Butterfield  
April 2017  
Sunrise in The Solent 62  
oil on board, 13 x 18 cm  
©The Artist



Sarah Butterfield  
June 2016  
Sunrise in The Solent VI  
oil on board, 18 x 25 cm  
©The Artist



Sarah Butterfield  
November 2010  
Evening in The Solent XIX  
oil on board, 13 x 18 cm  
©The Artist